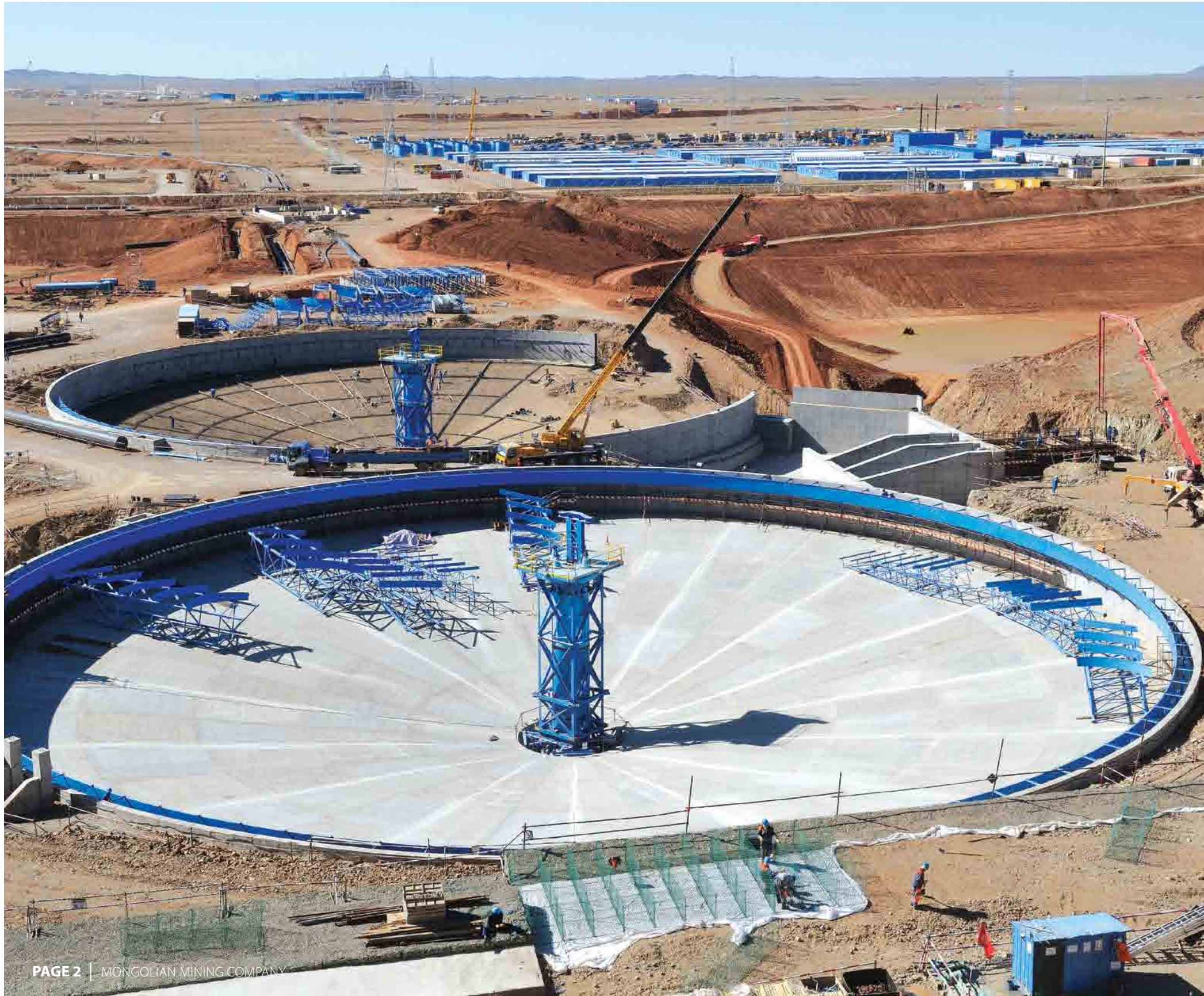


OYU TOLGOI **AT A** GLANCE



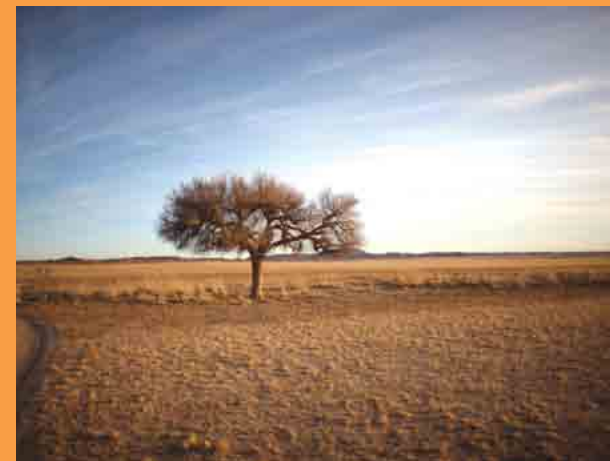
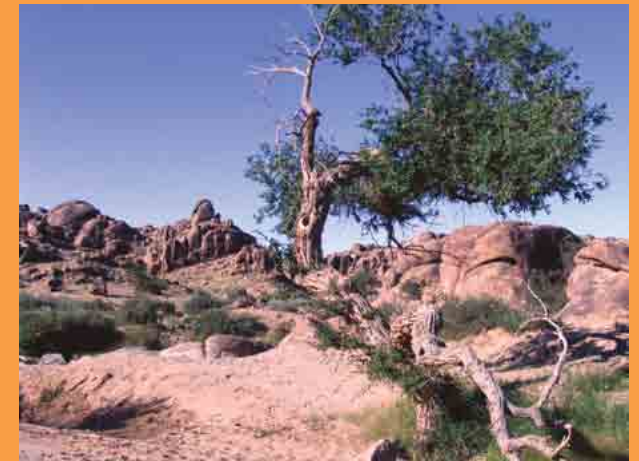
- Oyu Tolgoi is the world's largest undeveloped gold and copper mine, located in the South Gobi desert in Mongolia, approximately 600km south of the Mongolian capital Ulaanbaatar. The site was discovered in 2001.
- Oyu Tolgoi is anticipated to produce 450,000 tonnes of copper and 330,000 ounces of gold per year after starting our operations in 2012, making it one of the largest gold and copper mines in the world.
- Oyu Tolgoi is a joint venture between the Government of Mongolia, and Ivanhoe Mines. Rio Tinto took on full management control of the project in December 2010, and has a majority shareholding in Ivanhoe Mines.



Tailing thickeners with pump station concrete work completed (left)

ENVIRONMENTAL STANDARDS

- An independent Economic Impact Assessment has been conducted for Oyu Tolgoi, and the site's biodiversity and environmental policies meet World Bank Standards and are comparable to similar projects around the world. The investors in Oyu Tolgoi will rehabilitate the area of the mine when activities cease.
- Oyu Tolgoi will be one of the most "water conservative" mines in the world, committing to zero impact on community water sources. The primary water source for Oyu Tolgoi is the Gunii Hooloi aquifer - a deep, non-drinkable water source that is separate from the shallow water sources used by households and animals. It is 70 km from the mine.





Oyu Tolgoi LLC

Monnis Tower
Chinggis Avenue 15
Sukhbaatar District
Ulaanbaatar - 14240, Mongolia

Communications department

*Ph: +976 11 331880
Fax: +976 11 331893
Email: OTLLCinfo@ot.mn
www.ot.mn*